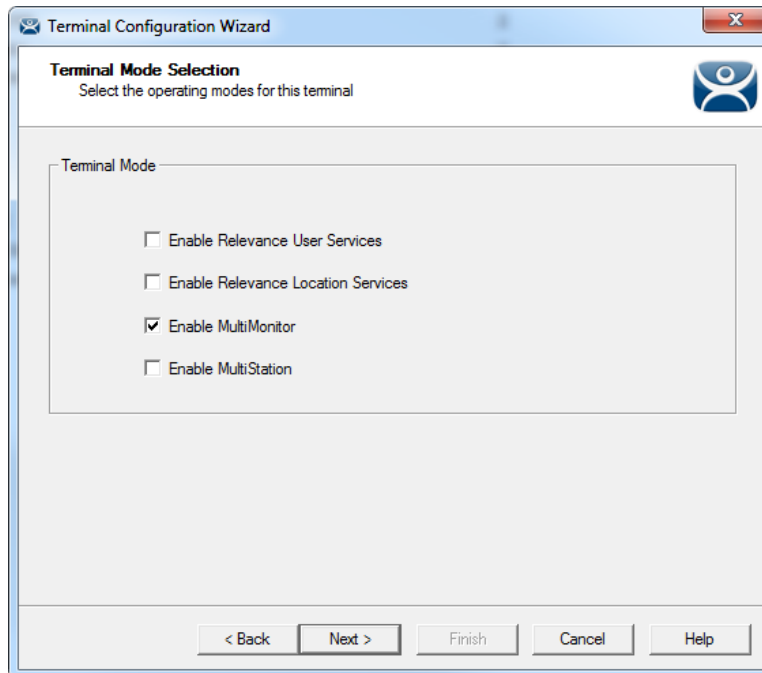


MultiMonitor - ThinManager 11.1 Changes

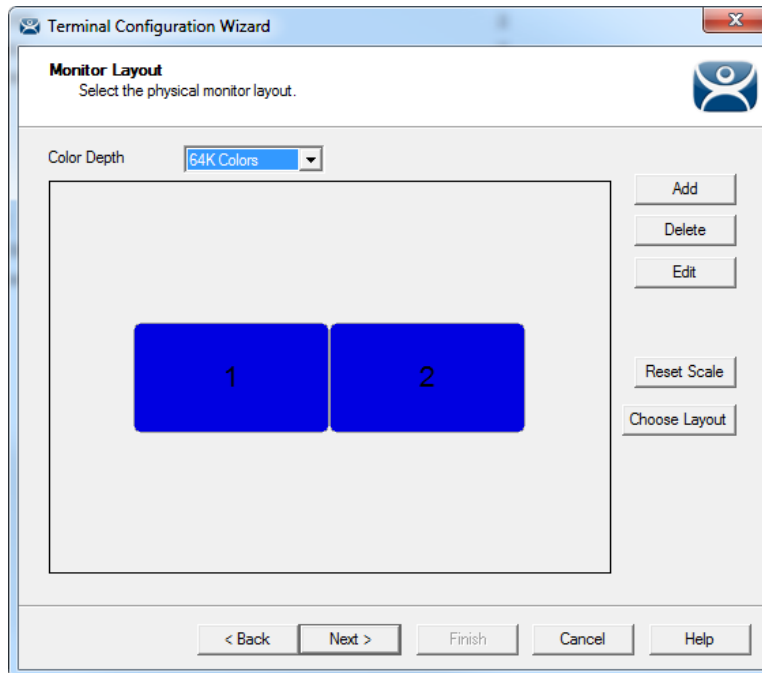
Terminal Mode Selection



Enable MultiMonitor by selecting the *Enable MultiMonitor* checkbox on the **Terminal Mode Selection** page of the **Terminal Configuration Wizard**.

MultiMonitor allows multiple monitors to be attached to client hardware. The monitors can be treated as individual sessions, called “Screened” or they can be combined into a continuous desktop, called “Spanned”. Spanned monitors need to have the same resolution and form a rectangle; they cannot be offset.

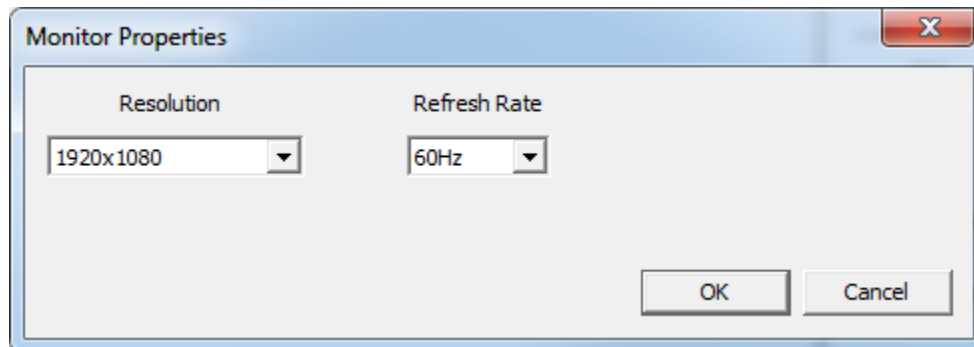
Monitor Layout



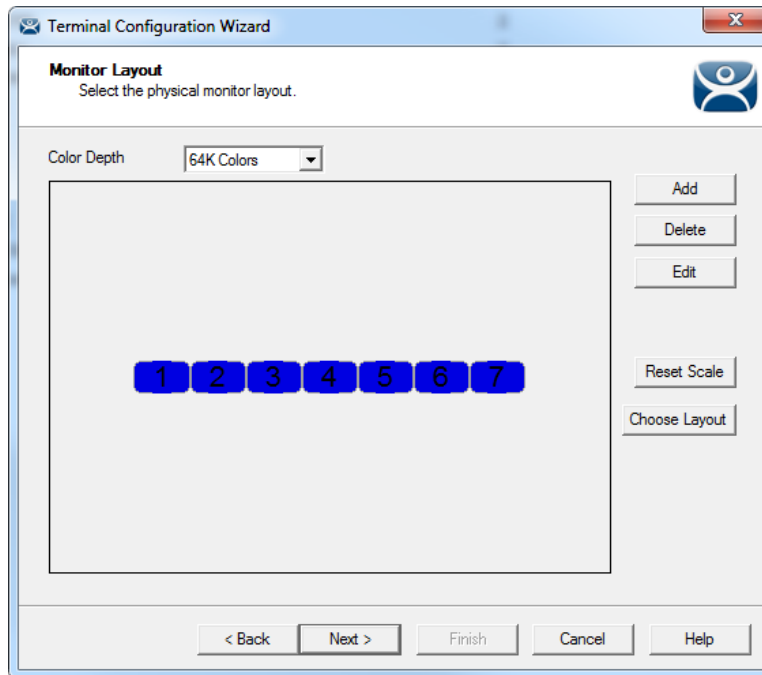
The default setting shows two monitors.

Buttons

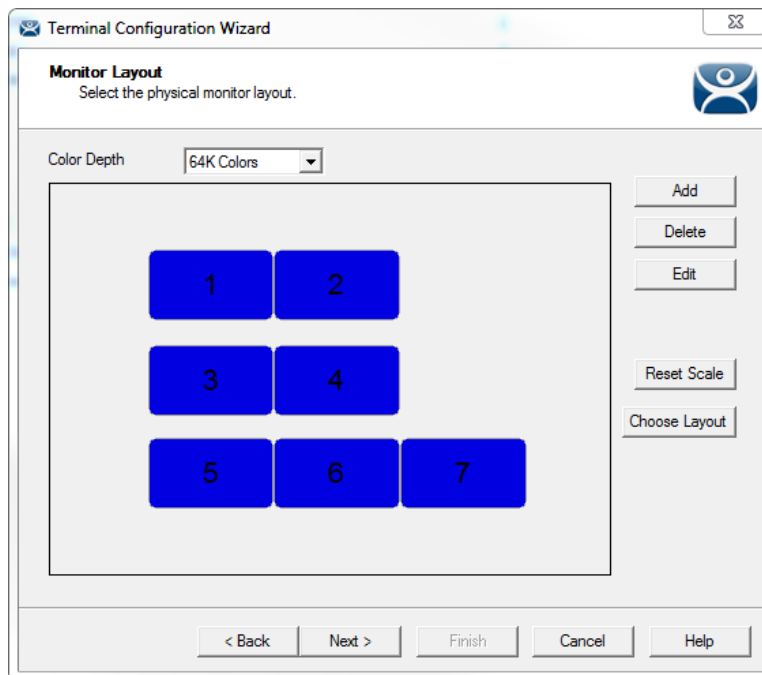
- *Add* – This button launches the **Monitor Properties** window and allows a new monitor to be added.
- *Delete* – This button will delete a highlighted monitor.
- *Edit* – This button will open the **Monitor Properties** window of a highlighted monitor and allow the resolution to be changed.
- *Reset Scale* – This button will center the monitors in the configuration wizard. You can also use the scroll wheel of the mouse to zoom in and out.
- *Choose Layout* – This button will allow you to select from pre-created layouts. Otherwise you can drag monitors to a location.



The resolution of the monitor is set on the **Monitor Properties** dialog.

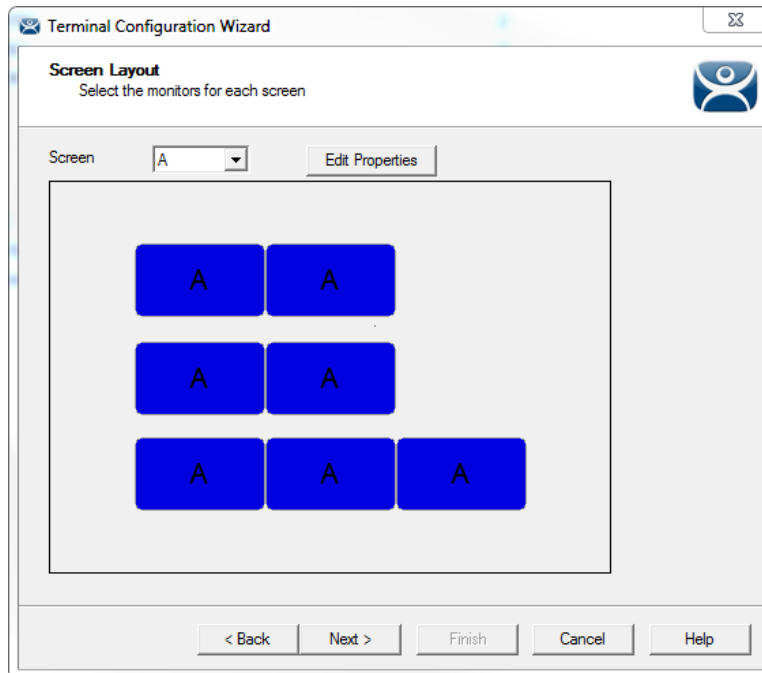


Once the desired number of monitors are added they can be moved by dragging.



The *Reset Scale* button will make them easier to see once in order.

Screen Layout

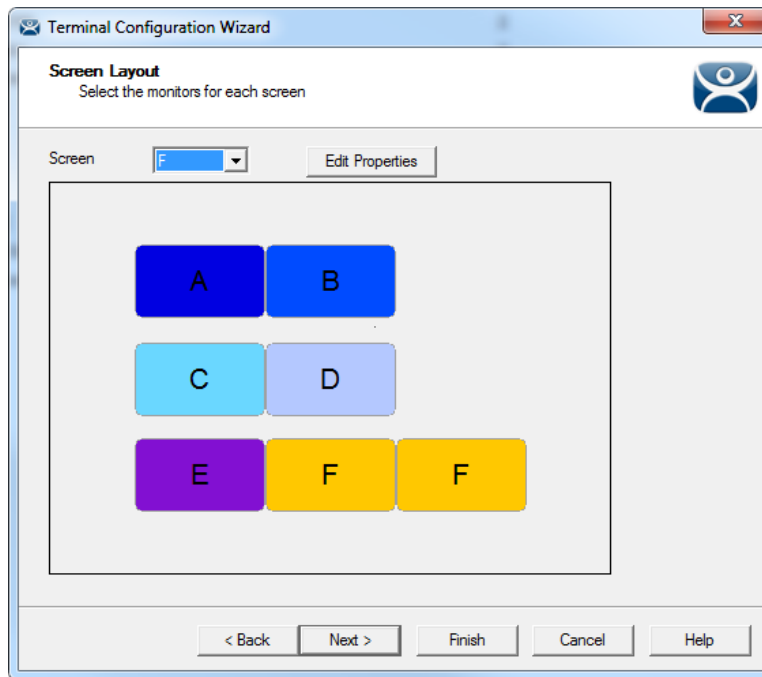


The **Screen Layout** page of the **Terminal Configuration Wizard** allows you to set whether a monitor shows a single session or is “spanned” to merge several monitors into one desktop.

Spanned monitors must form a rectangular shape and have the same resolution.

All the monitors will start as **Screen A**.

To change a monitor designation select the screen letter from the **Screen** drop-down and then select a monitor icon. This will apply the monitor letter to the screen.



Monitors can share a desktop if they have the same letter designation. They must be the same resolution and form a rectangle; they can't be askew.

The *Edit Properties* button will launch the **Screen Options** window to configure the monitor properties.

Screen Options

The *Edit Properties* button will launch the **Screen Options** window.

- **Main Monitor** – This sets which monitor will have the mouse focus on boot and will display the Relevance Main Menu.
- **Allow Display Clients to move to/from screen** – This checkbox allows you to move Display Clients from monitor to monitor by allowing you to open the Display Client in a different monitor.
- **Show Display Client Selector** – This checkbox will make the drop-down Group Selector present.
 - **Selector Options** – This button opens the **Display Client Selector Options** window.
 - **Auto-hide Selector** – This hides the Group Selector drop-down when checked. Unchecking it will show the Group Selector.
 - **Tile on Selector Activation** – This checkbox adds the tile command to the Group Selector.
 - **Select Menu Size** – This drop-down allows you to change the size of the Group Selector.
- **Enable Tiling** – This checkbox will show all Display Clients assigned to a monitor in a tiled mode if selected. Selecting one tile will make it full monitor.
 - **Tile Options** – This button opens the **Tile Options** window that configures tile options.
 - **Show Grid** – This checkbox will display gridlines when it is tiled.

- **Tile Activity Time (secs)** – This field sets the time before the monitor reverts to tiled mode when a single screen is showing.
- **Tile Display Clients at start up** – This checkbox configures the monitor to show the display clients in tiled mode at startup.
- **Include Main Menu as tile** – This checkbox will add a tile with the Main Menu in it. This is handy for terminals with touch screens.
- **Tile Interactive** – This checkbox changes the behavior of the mouse. Instead of switching from tiled mode to a single display client it allows the use to click into the tiled session and use the session in the tiled mode.
- **Screen Specific Mouse Button Mapping** – This checkbox allows you to assign actions to mouse buttons.
 - **Mouse Button Mapping** – This button opens the **Mouse Button Mapping** window.
 - Each button can be configured with a different action. These include
 - *Calibrate Touch Screen*
 - *Tile*
 - *Swap*
 - *Full Screen*
 - *Go to next display client*
 - *Go to previous display client*
 - *Log on Relevance user*
 - *Main Menu*
 - *Left Mouse Button*
 - *Right Mouse Button*
 - *Middle Mouse Button*
 - *Scroll Up*
 - *Scroll Down*
 - *Virtual Keyboard*
 - *Disable Button*

Touch Screen Modules had a Hold Time that can convert a long touch to a right click. Using the Mouse Mapping Button feature allow you to apply any of these actions to the long hold.

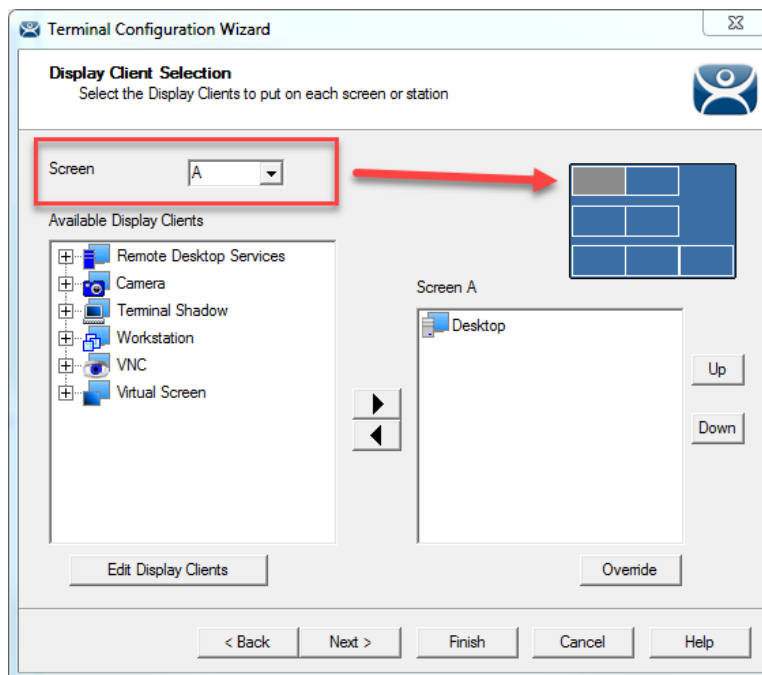
- **Use Microsoft Extended Desktop** – This checkbox will apply the Microsoft Extended Desktop to a spanned set of monitors.
With the Microsoft Extended Desktop an expanded application will stop at the monitor boundary as it does in Windows.
Without the Microsoft Extended Desktop an expanded application will fill the entire desktop.
- **Main Desktop Monitor** – This checkbox sets which monitor of a spanned set will be the primary desktop.
- **MultiStation Options** – This applies to MultiStation, a feature where a MultiMonitor thin client can support several users by adding multiple keyboards and mice. It is turned on by selecting the

selecting the *Enable MultiStation* checkbox on the **Terminal Mode Selection** page of the **Terminal Configuration Wizard**.

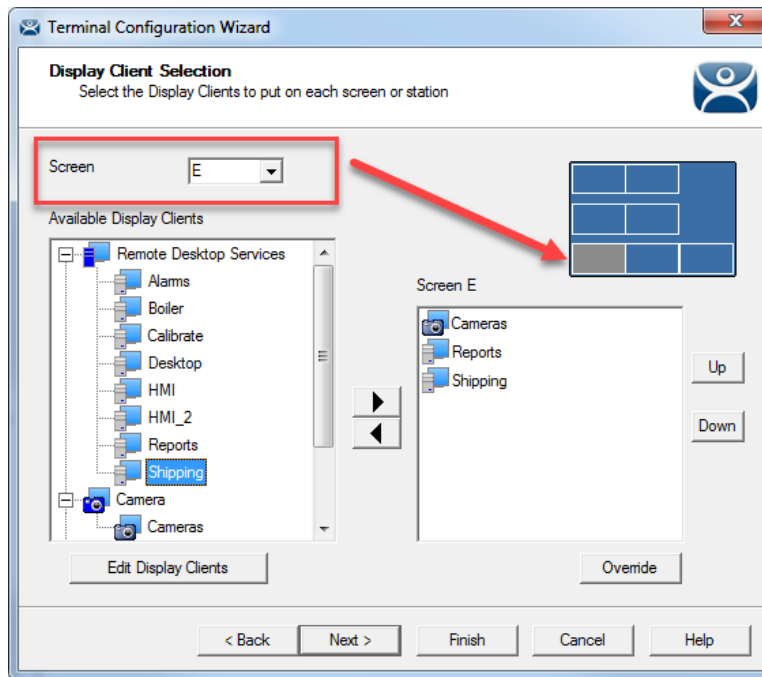
- **Station has a keyboard** – Use this checkbox if you are using a keyboard with MultiStation.
- **Station has a mouse** – Use this checkbox if you are using a mouse with MultiStation.
- **Screen Edge Display Client Selection** – This checkbox allows you to switch between display clients by moving the mouse to either edge of the monitor.

Display Client Selection

Display Clients are assigned to the screens on the **Display Client Selection** page of the **Terminal Configuration Wizard**.



Use the **Screen** drop-down to select the screen and add a display client by moving it into the **Screen “X”** list.

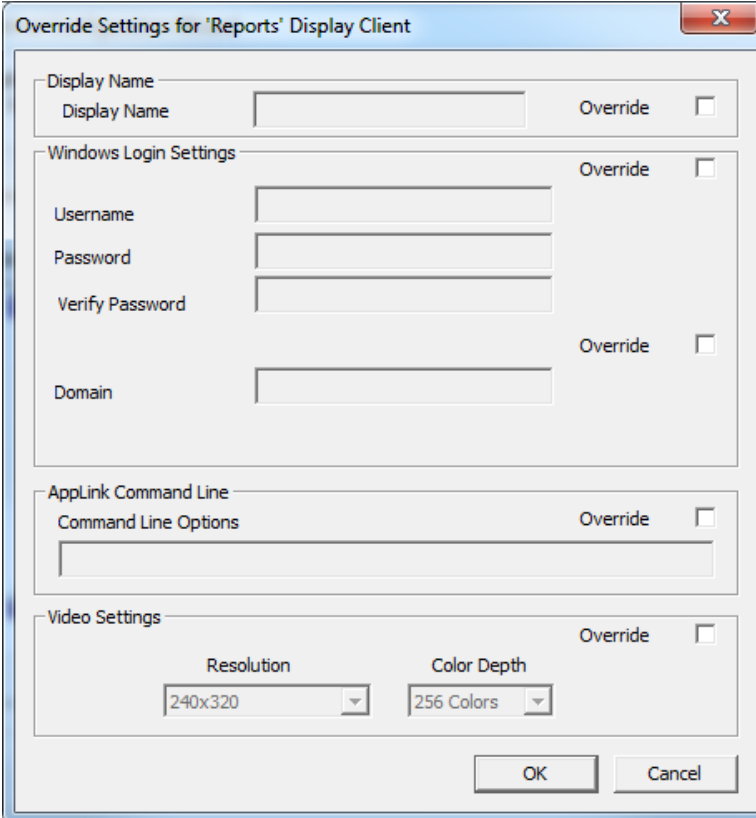


Change the screen letter in the *Screen* drop-down to select a different screen to apply the display client to that screen. The icon of the screen will change colors to show which screen is being edited.

Multiple display clients can be added to each screen.

The *Override* button launches the **Override Settings** window where the display client can have customized settings applied.

Override Settings



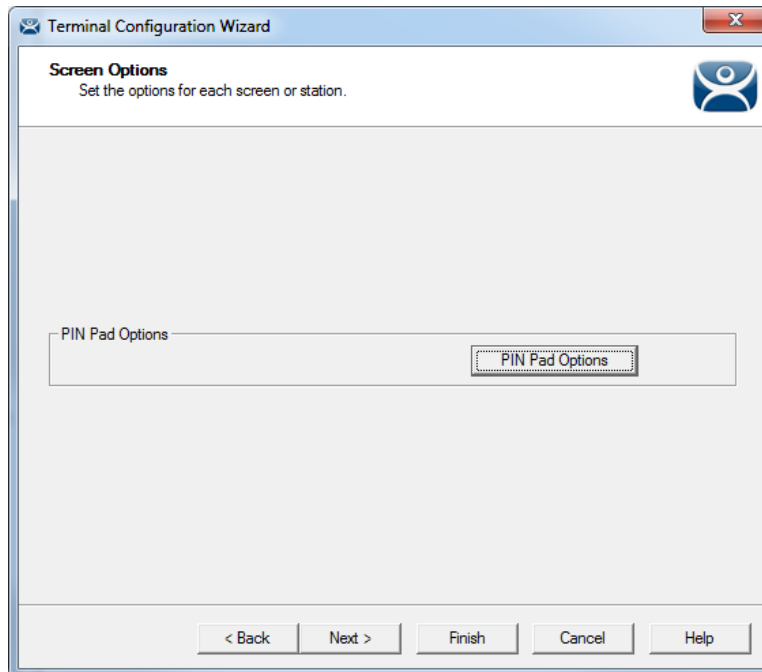
The **Override Settings** window is launched when a display client is highlighted and the *Override* button is selected.

Selecting an **Override** checkbox activates the override setting and allows customization.

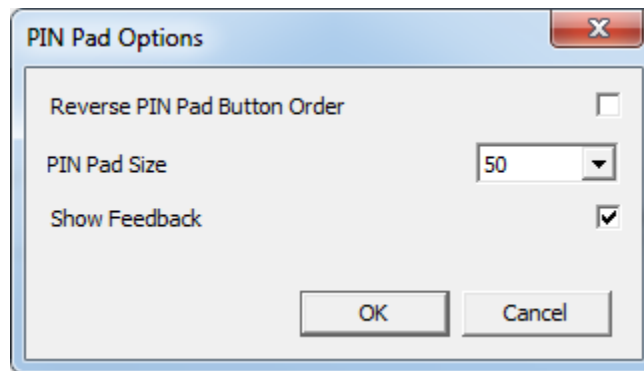
- **Display Name** – This allows the display client to show a different name than the one originally listed.
- **Windows Login Settings** – This allows different credentials to be used for the display client.
- **AppLink Command Line** – This field allows different command line parameters to be applied to the program.
- **Video Settings** – This allows the resolution of the display client to be changed from the monitor setting.

Screen Options

The Screen Options page allows PIN Pad (Personal Identification Number) options to be set.



The *PIN Pad Options* button launches the **PIN Pad Options** window.



The **PIN Pad Options** window allows the Personal Identification Number to be configured.

- **Reverse PIN Pad Button Order** – This checkbox changes the pin pad from 1-2-3 on the top row like a phone to 7-8-9 on the top row like a calculator.
- **PIN Pad Size** – This sets the size of the pin pad as a percentage of the screen.
- **Show Feedback** – This will display the numbers typed in a window.

The rest of the Terminal Configuration Wizard follows the standard configuration wizard.